

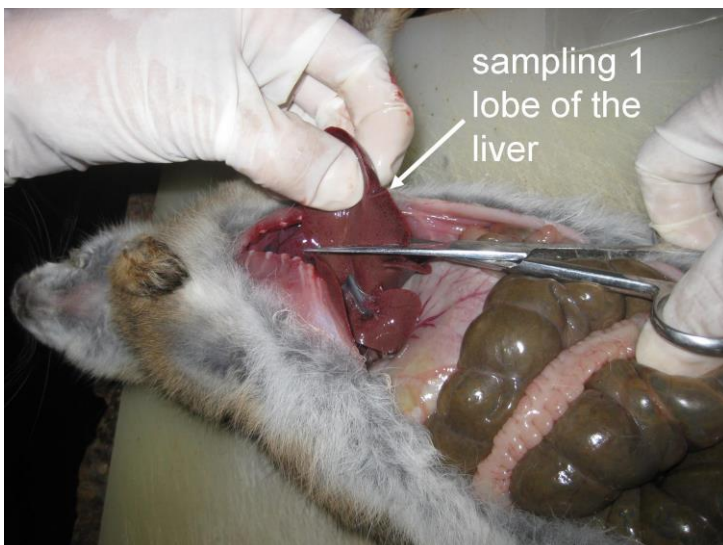
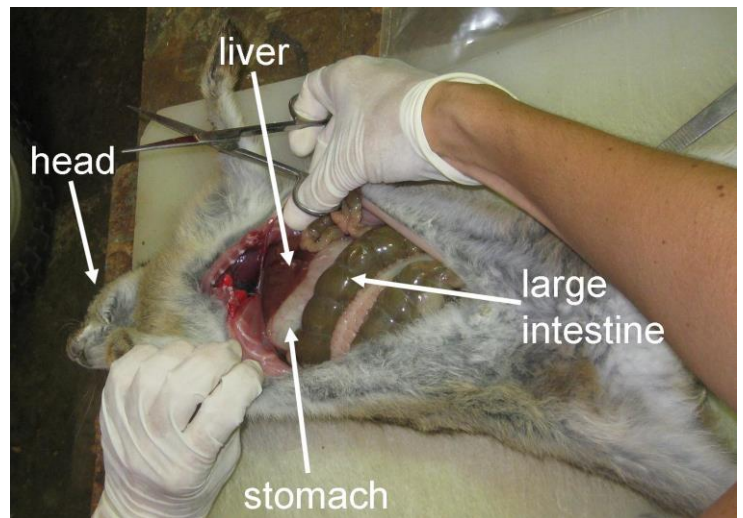
Collecting liver samples from rabbits that died from RHDV



Typical posture of a rabbit that died from RHDV:

- No outward signs of disease or injury
- Lying on its side with legs stretched out and head tilted backwards

1. Open up rabbit and locate liver



2. Remove part of a liver lobe

3. Cut off a small piece of liver tissue into pre-filled container



Clean scissors thoroughly between samples if sampling more than one rabbit (rinse with water and wipe)

Once in the fixative the sample is stable at Room Temperature. It does not need to be refrigerated during transport

Remove a small piece only, approximately half a gram is sufficient (5mm x 5mm x 10 mm)

The tube should not flow over when you add the sample:



5. Label tube with

- RHDV
- Location
- State
- Date



6. Send to:

CSIRO Ecosystem Sciences
Attn: Tanja Strive/Ros Mourant
Clunies Ross St
Acton, ACT, 2601